

BLUEBIRD

CROSS STITCH PROJECT

Share your completed projects
with us on social media
using #mynotions!



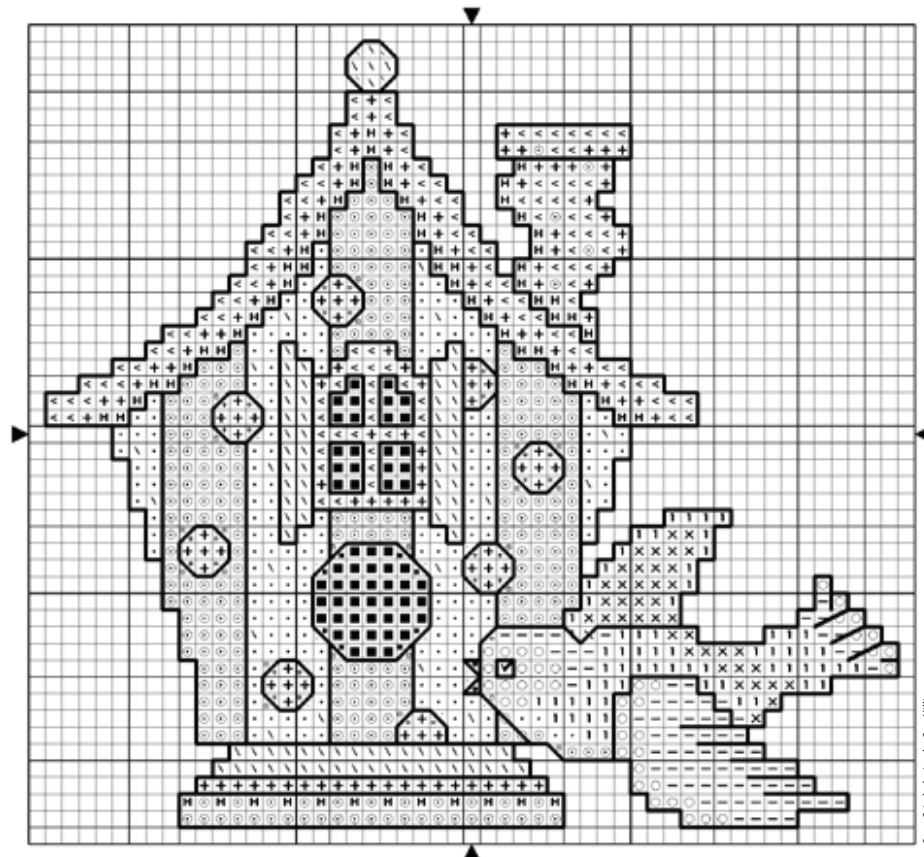
Stitched on 14-count Aida using two strands of Sullivans Embroidery Floss for all Cross Stitches with a size 26 Tapestry Needle.

All Back Stitch (BS) worked as noted: Work BS on bird's beak and breast with one strand of 45396. Bird's eye is a cross stitch worked with two strands of 45273; one strand of 45183 is used to work the light reflection in the eye. Work remaining BS on bird with one strand of 45273. Work BS around window panes and entry hole with one strand of 45351. Work all remaining BS with one strand of 45396.

DESIGN SIZE:

51 stitches wide x 47 stitches high
(3 $\frac{5}{8}$ " wide x 3 $\frac{3}{8}$ " high on 14-count)

SYMBOL	SULLIVANS FLOSS COLOR NUMBER	DESCRIPTION
•	44001	White
●	45183	Light Tangerine
+	45191	Salmon
<	45192	Light Salmon
⊙	45221	Light Baby Pink
BS	45273	Dark Antique Blue
X	45274	Medium Antique Blue
I	45275	Light Antique Blue
■	45351	Black Brown
H	45362	Medium Salmon
-	45376	Very Light Antique Blue
○	45377	Ultra Very Light Antique Blue
BS	45396	Light Dark Beige Gray
∖	45479	Light Forest Green



This chart may be reproduced for personal use and teaching purposes only. This chart is NOT for resale.