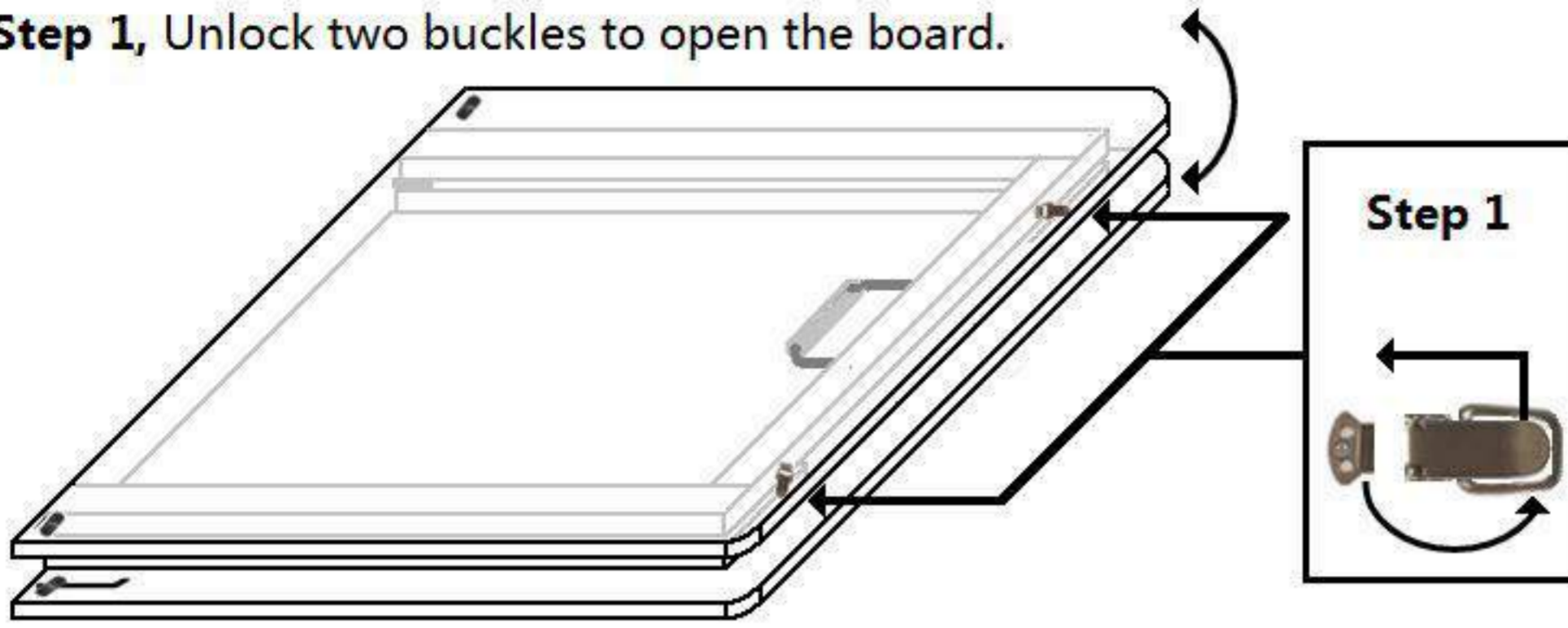


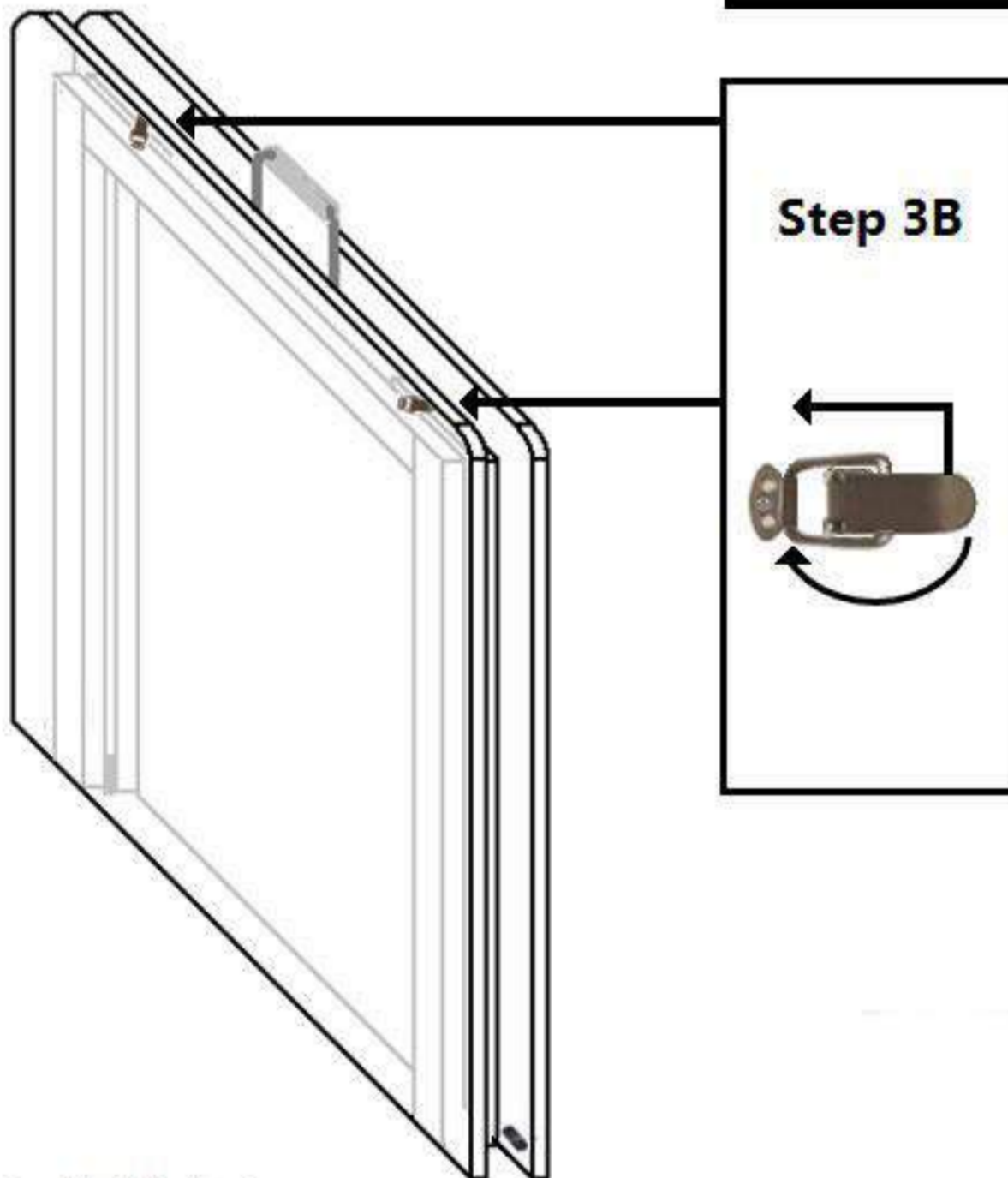
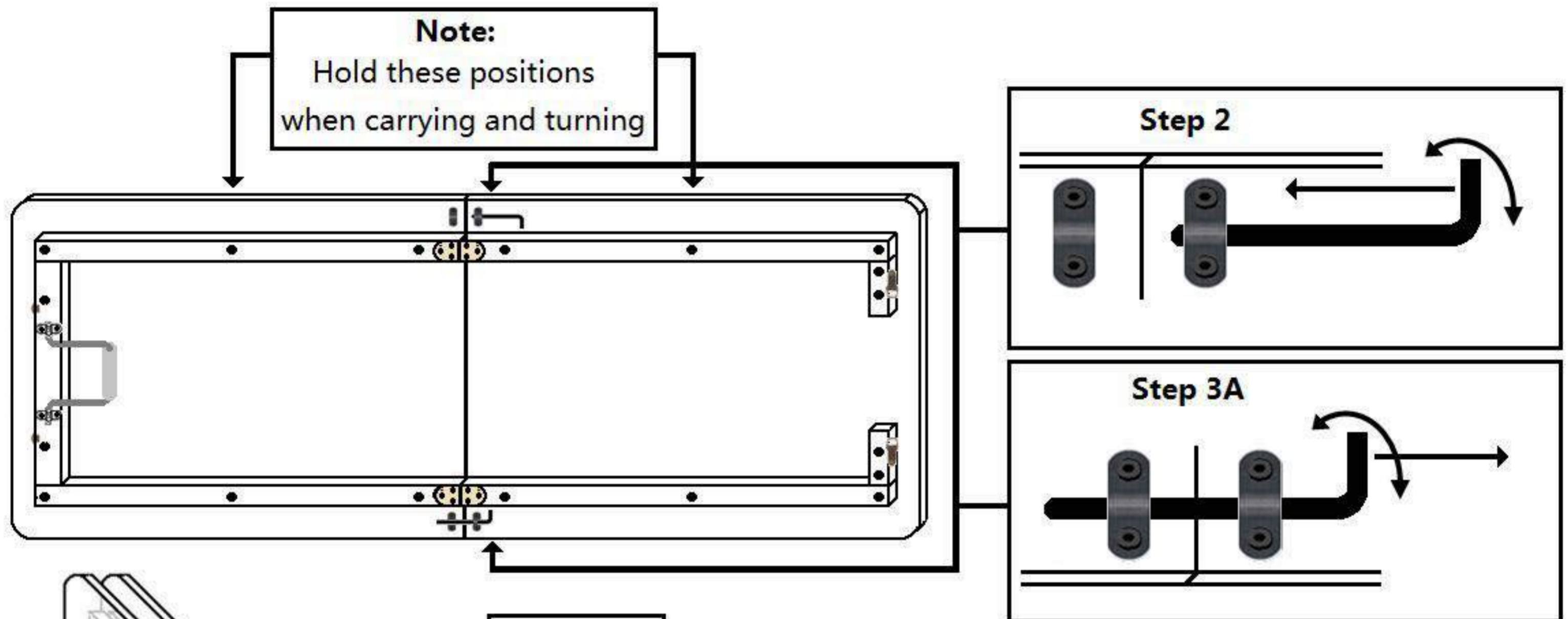
This BetterBoard is pre-assembled before shipping, it is very easy and convenient to use.

**Step 1,** Unlock two buckles to open the board.



**Step 2,**

Lay the BetterBoard flat, turn and push the latch into the brackets at the appropriate position.



**Step 3,**

when it is not in use, please turn and pull the latch from the left bracket and hold it in the right bracket at appropriate position - see step 3A, and close the boards, then close two buckles at the end of the board to lock it - see step 3B, to secure the BetterBoard while carrying or storing.

A fitted Ironing Cover with protective pad is included with your BetterBoard. To use it, cover the surface of the BetterBoard after securely opening and locking it.

**Safety & Maintenance.**

This BetterBoard is not a toy, Do not let children play on, under, or around it. To clean it, use a cloth or sponge with mild soap. (Never use anything abrasive). Never rest a hot iron directly on the surface.

**Sullivans USA**

4341 Middaugh Ave. Downers Grove, IL 60515 1-800-862-8586 Fax: (630) 435-1532

Email: [Sullivans@SullivansUSA.net](mailto:Sullivans@SullivansUSA.net)

**M. T. Sullivan & Co. Pty. Ltd.**

40 Parramatta Road Underwood, Brisbane, Queensland Australia

**Sullivans Enterprises (N. Z.) Ltd.** 28 Sir William Ave. East Tamaki, Auckland New Zealand

For further assistance, please call 800-862-8586. Some restrictions apply. See website for details.