

SULLIVANS

Item No. 38436

Stowaway Table

INSTRUCTIONS

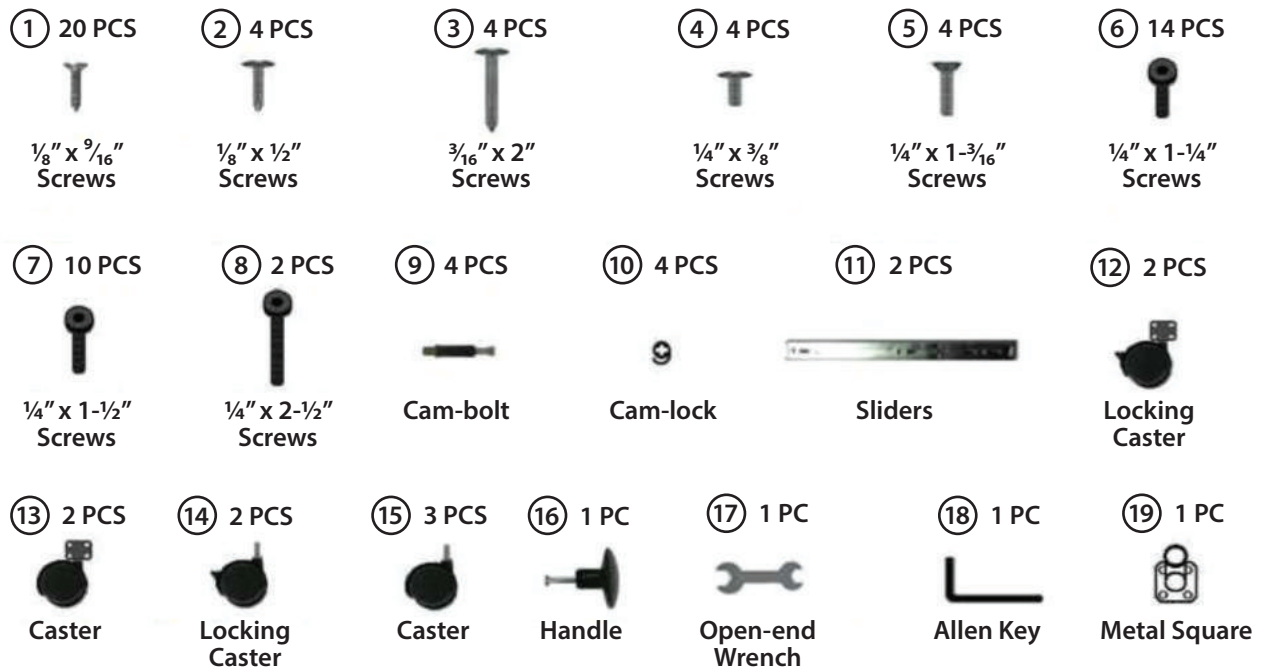
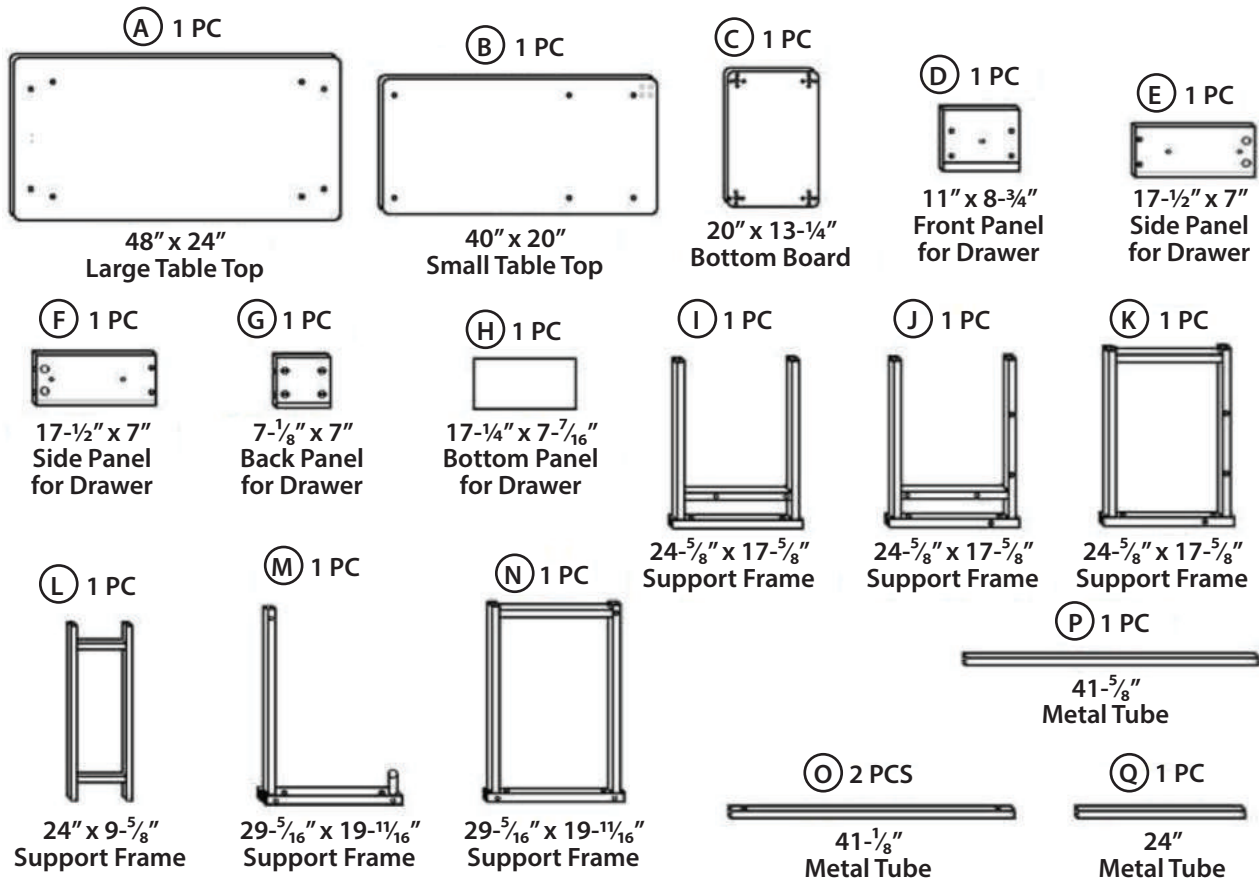


www.sullivansusa.net

Part List for Stowaway Table

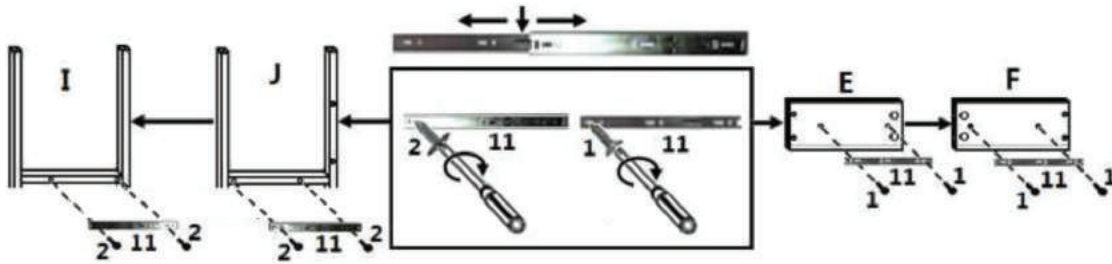
Tools needed: Phillips Head screwdriver

Assembly time: Approximately 40 minutes



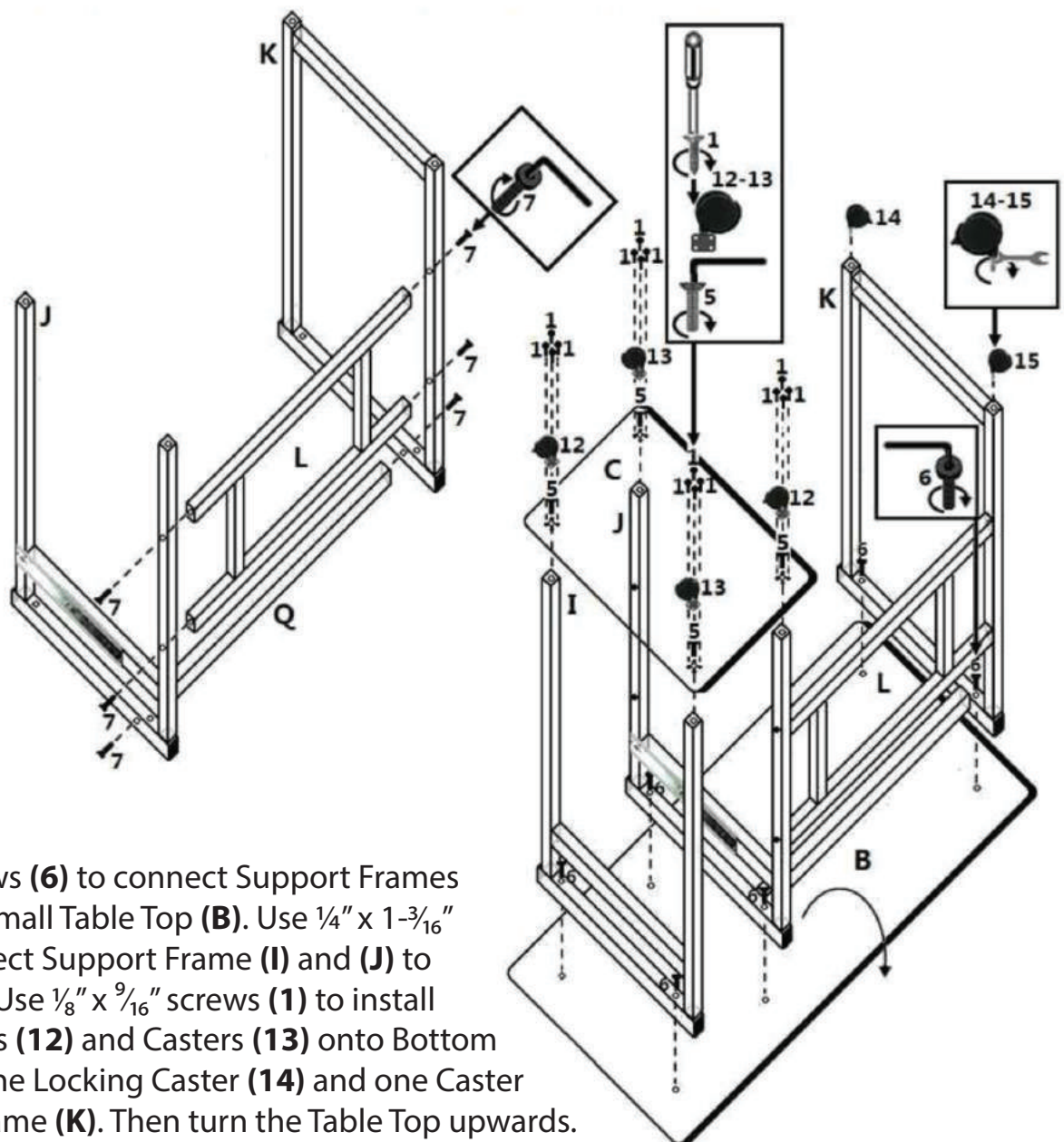
Step 1

Press the plastic locking bar in the drawer Sliders (11) and pull out the track. Screw the track on to the Support Frames, (I) and (J), and Drawer Side Panels (E) and (F).



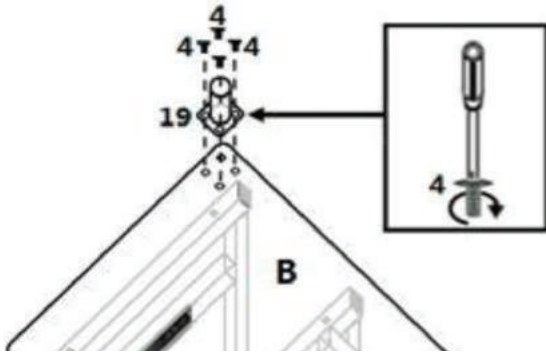
Step 2

Use 1/4" x 1-1/2" screws (7) to connect the Support Frames (J) and (K) to (L) and Metal Tube (Q).



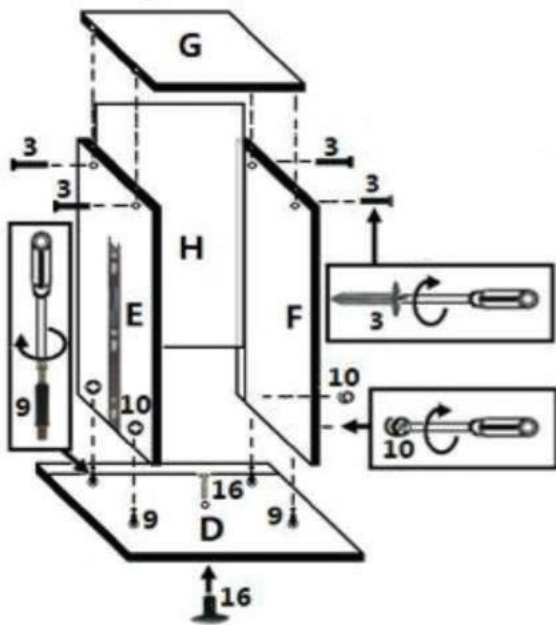
Step 3

Use 1/4" x 1-1/4" screws (6) to connect Support Frames (I), (J), and (K) to Small Table Top (B). Use 1/4" x 1-3/16" screws (5) to connect Support Frame (I) and (J) to Bottom Board (C). Use 1/8" x 9/16" screws (1) to install the Locking Casters (12) and Casters (13) onto Bottom Board (C). Screw one Locking Caster (14) and one Caster (15) to Support Frame (K). Then turn the Table Top upwards.



Step 4

Use $\frac{1}{4}$ " x $\frac{3}{8}$ " screws (4) to connect Metal Square (19) to corner of Small Table Top (B).

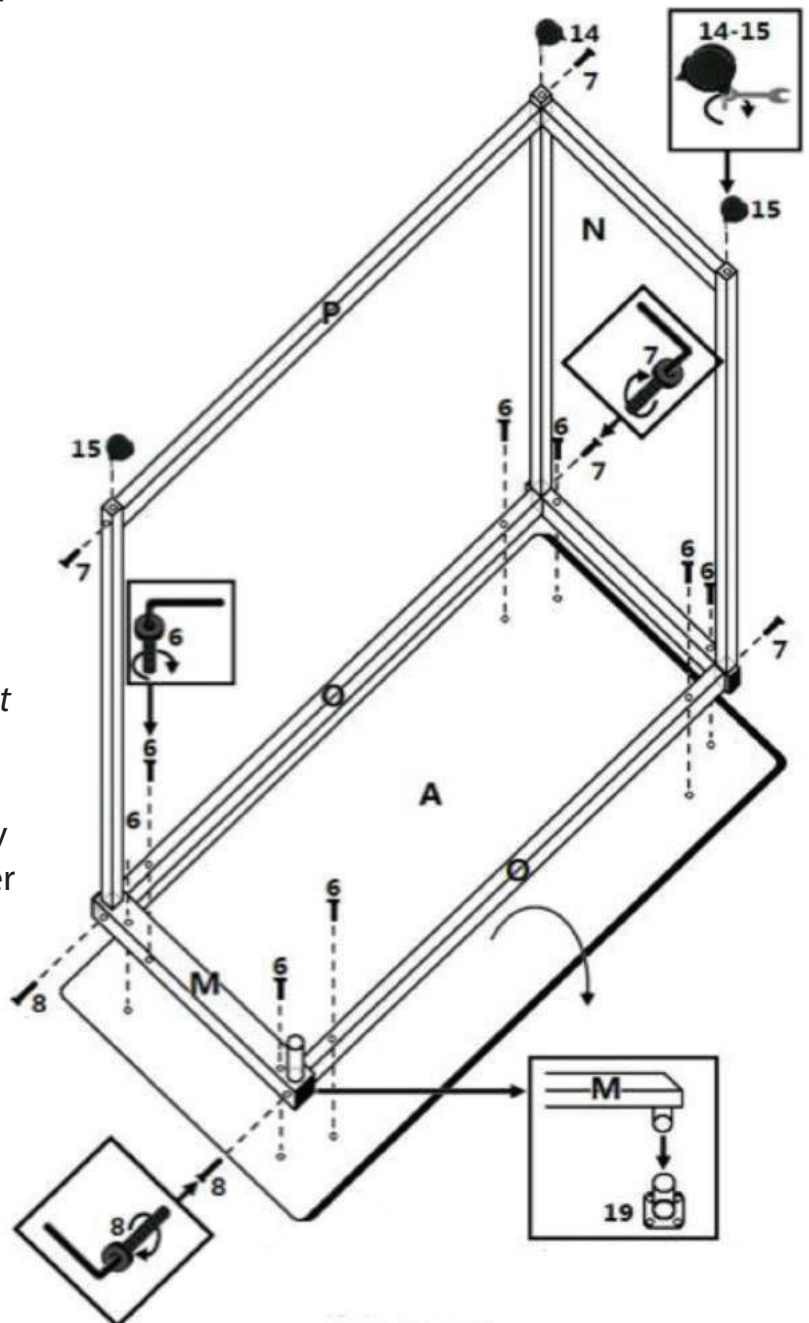


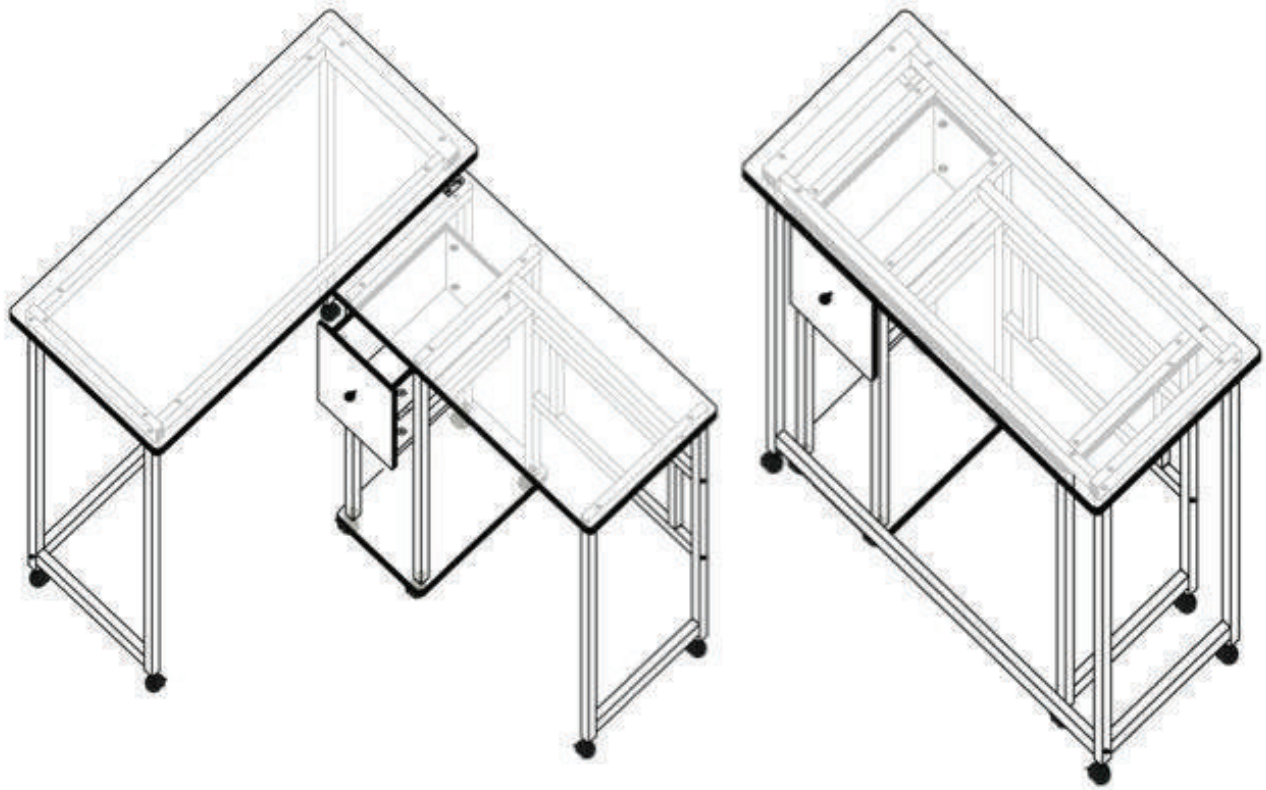
Step 5

Screw Cam-bolt (9) and Handle (16) into Front Panel (D). Screw Cam-lock (10) into Side Panels (E) and (F), then insert into Front Panel (D). Insert Bottom Panel (H) into the grooves of Panels (E), (F), and (D). Use $\frac{3}{16}$ " x 2" screws (3) to connect the Back Panel (G) with Side Panels (E) and (F). Tightly screw Cam-Locks (10) and put in the drawer.

Step 6

Use $\frac{1}{4}$ " x 1- $\frac{1}{4}$ " screws (6) to connect the Metal Tube (O), Support Frames (M) and (N) with Large Table Top (A). **NOTE: Do not screw to the end.** Then connect Support Frames (M) and (N) with Metal Tubes (P) and (O). Lastly, screw all the screws tightly to the end. Then install one Locking Caster (14) and two Casters (15) on to Support Frame (M) and (N). Turn the Table Top upwards. Insert the round tube on Support Frame (M) into the round tube on Table Top (B).





Safety & Maintenance

This table is not a toy - do not let children play on, under, or around it. To clean the table, use a cloth or sponge with mild soap. Never use anything abrasive. Never rest a hot iron directly on the surface.

Sullivans USA

4341 Middaugh Avenue • Downers Grove, IL • Ph. (800) 862-8586 • Sullivans@SullivansUSA.net

M. T. Sullivan & Co. Pty. Ltd.

40 Parramatta Road • Underwood, Brisbane, Queensland Australia

Sullivans Enterprises (NZ) Ltd.

28 Sir William Avenue • East Tamaki, Auckland New Zealand

Sullivans USA, Inc. will replace any missing or defective parts within 30 days of purchase. Fax a dated receipt to (630) 435-1532 or email to Sullivans@SullivansUSA.net, along with your request. Some restrictions apply. See website for details.

This policy does not apply to damages due to shipping. For further assistance, please call toll-free at (800) 862-8586.



DO NOT RETURN TO THE STORE

**FOR ASSISTANCE WITH MISSING OR REPLACEMENT
PARTS, INSTALLATION, OR INFORMATION**

PLEASE CALL US AT

800.862.8586



www.sullivansusa.net



www.sullivansusa.net

4341 MIDDAUGH AVENUE • DOWNERS GROVE, IL 60515 • ORDERS: 800.862.8586 • FAX: 630.435.1532